

2 BEDROOM

Type B

58 sqm / 624 sqft

BLK 38

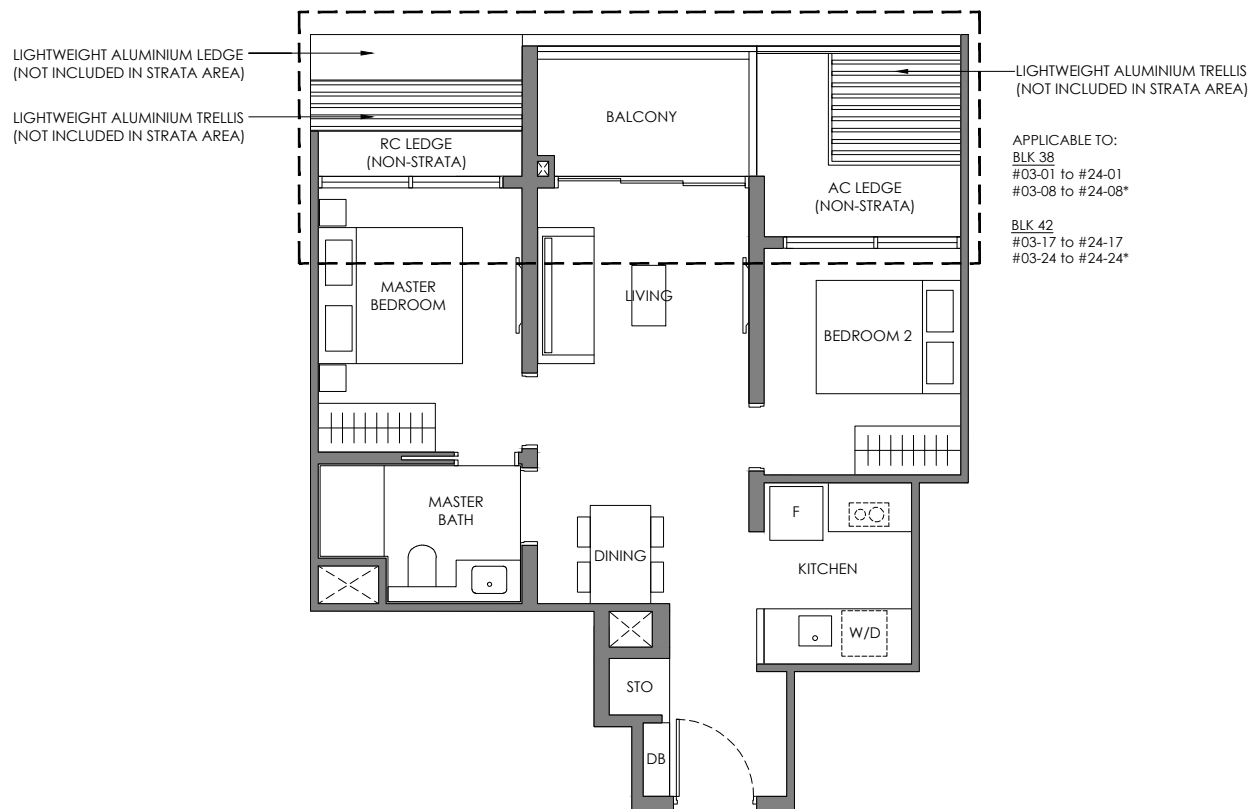
#02-01 to #24-01

#02-08 to #24-08*

BLK 42

#02-17 to #24-17

#02-24 to #24-24*



APPLICABLE TO:
BLK 38 BLK 42
#02-01 #02-17
#02-08* #02-24*

SCAN FOR FACADE CATALOGUE

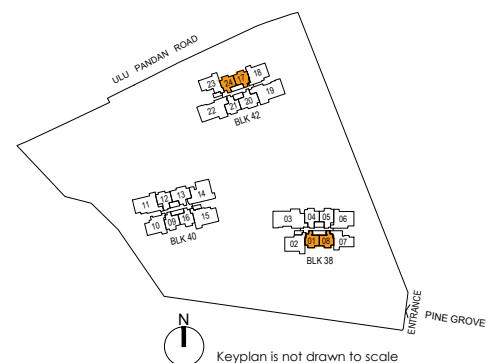


Legend (Where Applicable) :

F - Fridge WC - Water Closet STO - Store
W/D - Washer cum Dryer HS - Household Shelter DM - Display Module
DB - Distribution Board PR - Powder Room WPD - Water Purifier & Dispenser
* Mirror Image WI - Wine Chiller DW - Dish Washer

- Wall not allowed to be hacked or altered (including by way of drilling)
- Services void space (excluded from strata area)
- Rainwater downpipe shaft space (excluded from strata area)

DISCLAIMER: Area includes balcony where applicable, and excludes among others, the air-conditioner (AC) ledge and RC - Reinforced Concrete Ledge. Please refer to the key plan for orientation. All floor plans are approximate measurements only and are subject to government re-survey. The Balcony shall not be enclosed unless with the approved balcony screen. The cost of screen and installation shall be borne by the Purchaser.



2 BEDROOM PREMIUM

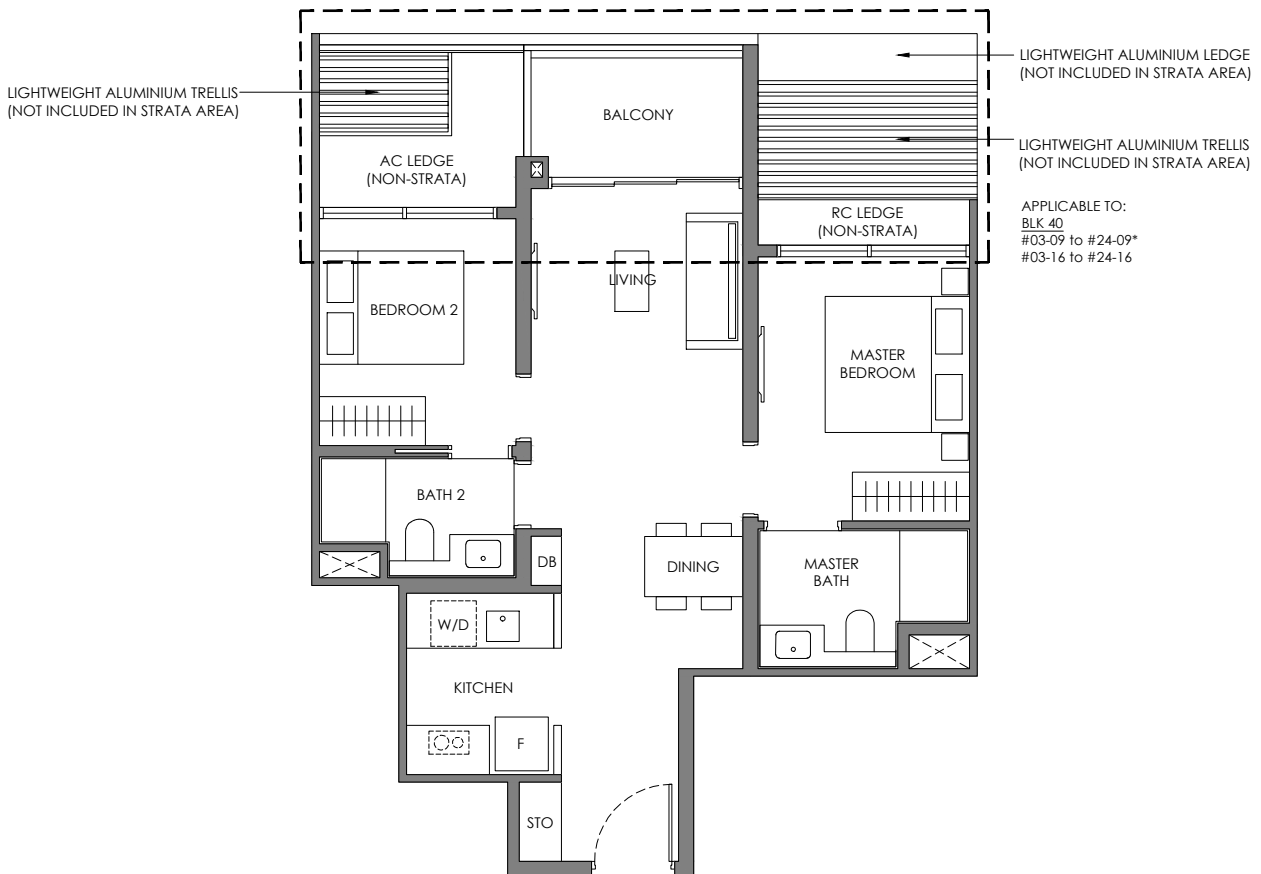
Type BP-1

65 sqm / 700 sqft

BLK 40

#02-09 to #24-09*

#02-16 to #24-16



APPLICABLE TO:
BLK 40
#02-09*
#02-16

SCAN FOR FACADE CATALOGUE



Legend (Where Applicable) :

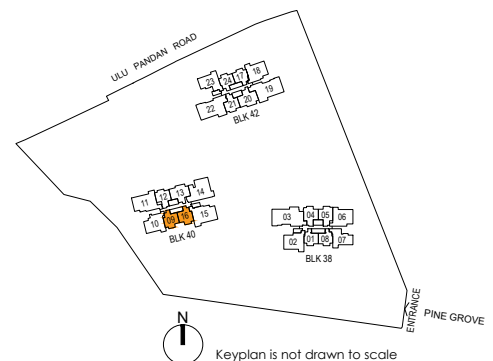
F - Fridge
W/D - Washer cum Dryer
DB - Distribution Board
* Mirror Image
WC - Water Closet
HS - Household Shelter
PR - Powder Room
WI - Wine Chiller
STO - Store
DM - Display Module
WPD - Water Purifier & Dispenser
DW - Dish Washer

Wall not allowed to be hacked or altered (including by way of drilling)

Services void space (excluded from strata area)

Rainwater downpipe shaft space (excluded from strata area)

DISCLAIMER: Area includes balcony where applicable, and excludes among others, the air-conditioner (AC) ledge and RC - Reinforced Concrete Ledge. Please refer to the key plan for orientation. All floor plans are approximate measurements only and are subject to government re-survey. The Balcony shall not be enclosed unless with the approved balcony screen. The cost of screen and installation shall be borne by the Purchaser.



2 BEDROOM PREMIUM

Type BP-2

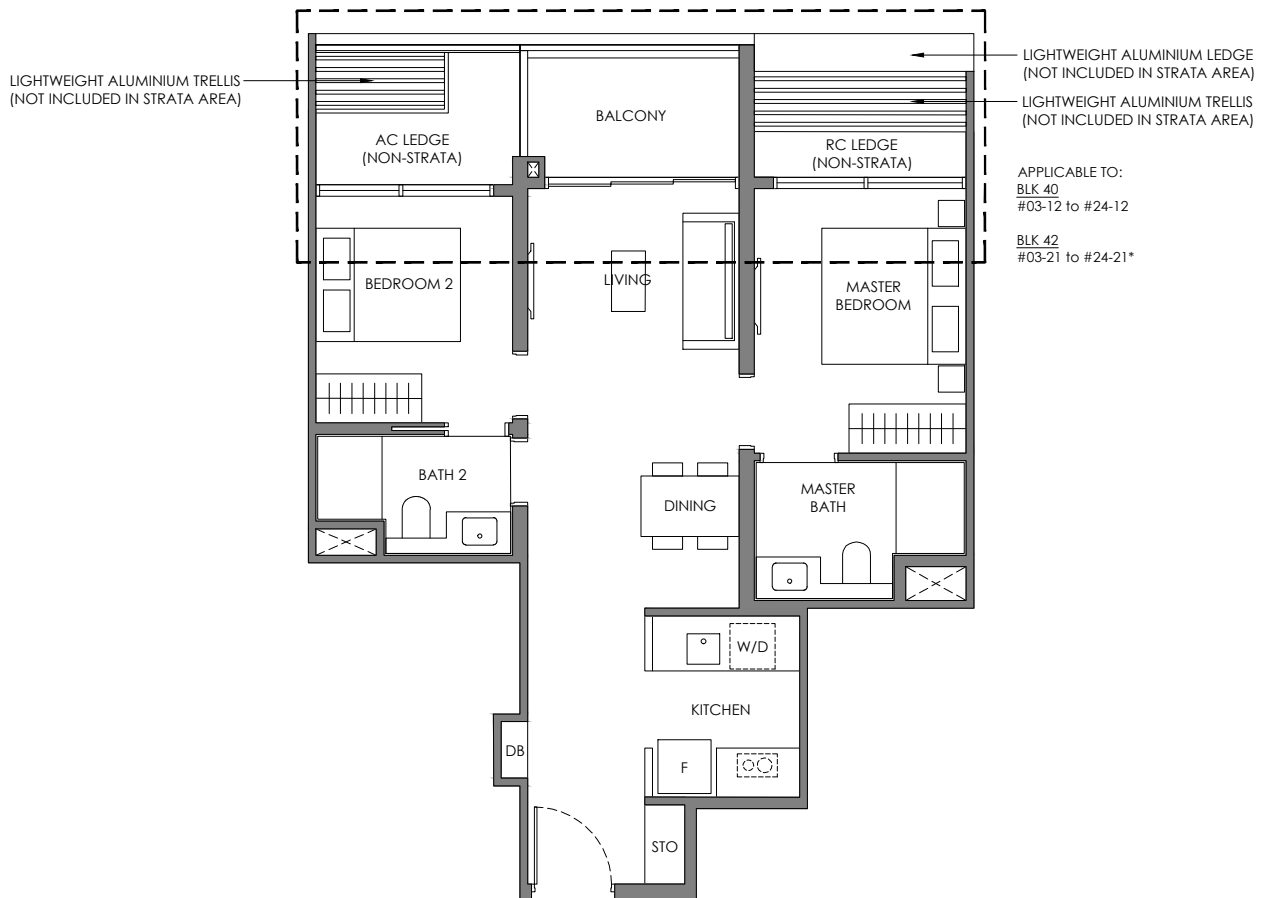
65 sqm / 700 sqft

BLK 40

#02-12 to #24-12

BLK 42

#02-21 to #24-21*



APPLICABLE TO:
BLK 40 BLK 42
#02-12 #02-21*

SCAN FOR FACADE CATALOGUE

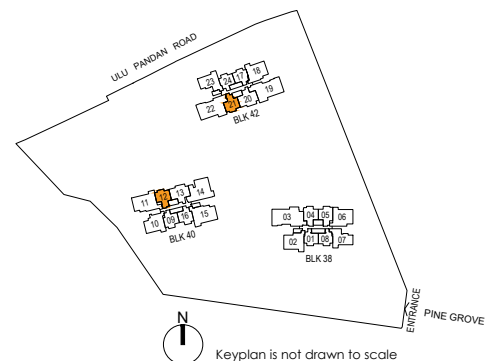


Legend (Where Applicable) :

F - Fridge WC - Water Closet STO - Store
W/D - Washer cum Dryer HS - Household Shelter DM - Display Module
DB - Distribution Board PR - Powder Room WPD - Water Purifier & Dispenser
* Mirror Image WI - Wine Chiller DW - Dish Washer

Wall not allowed to be hacked or altered (including by way of drilling)
Services void space (excluded from strata area)
Rainwater downpipe shaft space (excluded from strata area)

DISCLAIMER: Area includes balcony where applicable, and excludes among others, the air-conditioner (AC) ledge and RC - Reinforced Concrete Ledge. Please refer to the key plan for orientation. All floor plans are approximate measurements only and are subject to government re-survey. The Balcony shall not be enclosed unless with the approved balcony screen. The cost of screen and installation shall be borne by the Purchaser.



2 BEDROOM + STUDY

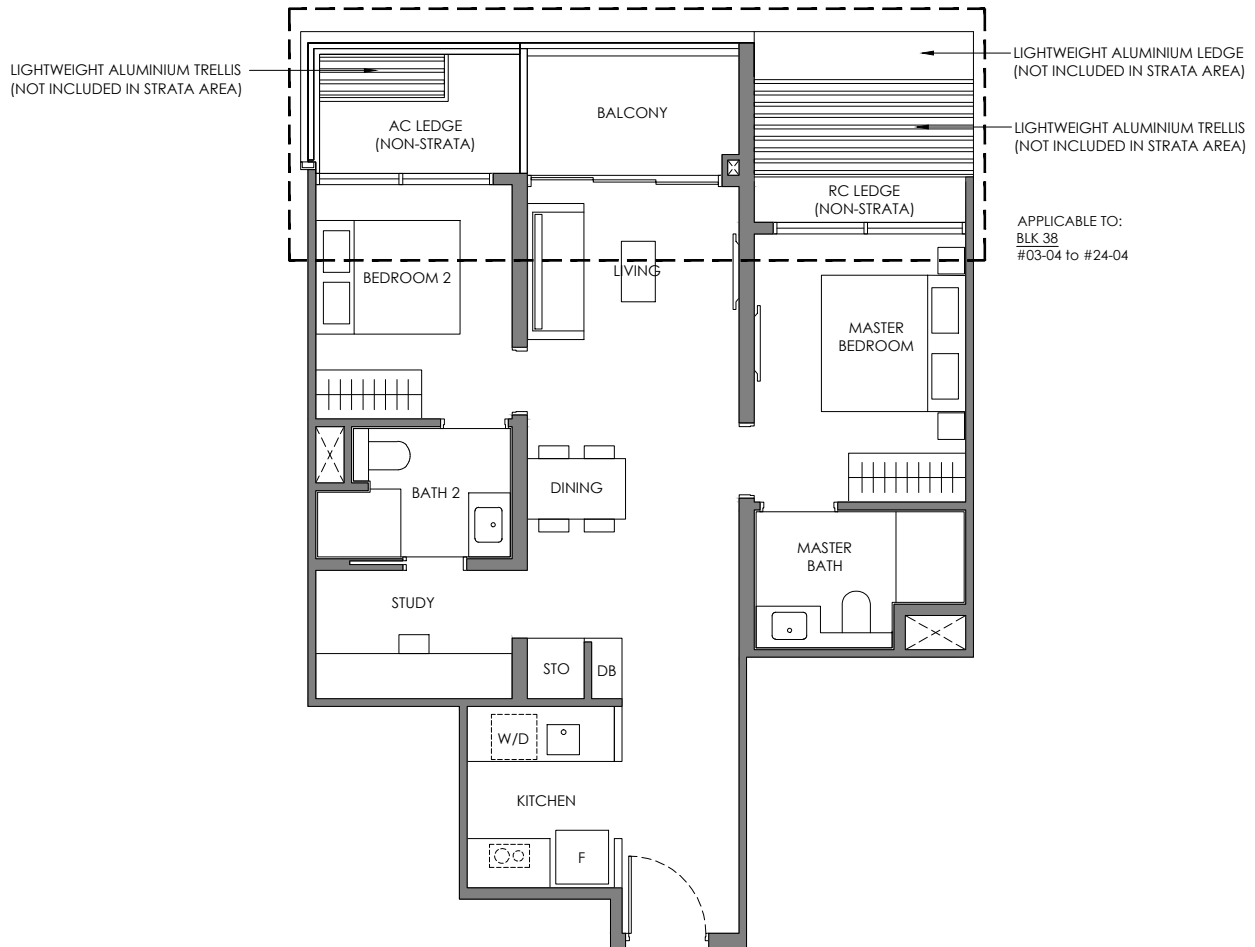
Type BS

73 sqm / 786 sqft

BLK 38

#02-04 to #24-04

#02-05 to #24-05*



APPLICABLE TO:
BLK 38
#02-04
#02-05 to #24-05*

SCAN FOR FACADE CATALOGUE

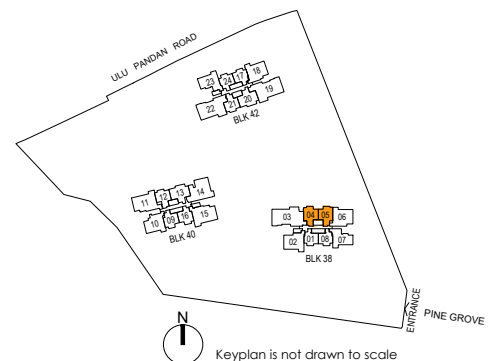


Legend (Where Applicable) :

F - Fridge
W/D - Washer cum Dryer
DB - Distribution Board
* Mirror Image
WC - Water Closet
HS - Household Shelter
PR - Powder Room
WI - Wine Chiller
STO - Store
DM - Display Module
WPD - Water Purifier & Dispenser
DW - Dish Washer

Wall not allowed to be hacked or altered (including by way of drilling)
Services void space (excluded from strata area)
Rainwater downpipe shaft space (excluded from strata area)

DISCLAIMER: Area includes balcony where applicable, and excludes among others, the air-conditioner (AC) ledge and RC - Reinforced Concrete Ledge. Please refer to the key plan for orientation. All floor plans are approximate measurements only and are subject to government re-survey. The Balcony shall not be enclosed unless with the approved balcony screen. The cost of screen and installation shall be borne by the Purchaser.



3 BEDROOM

Type C-1

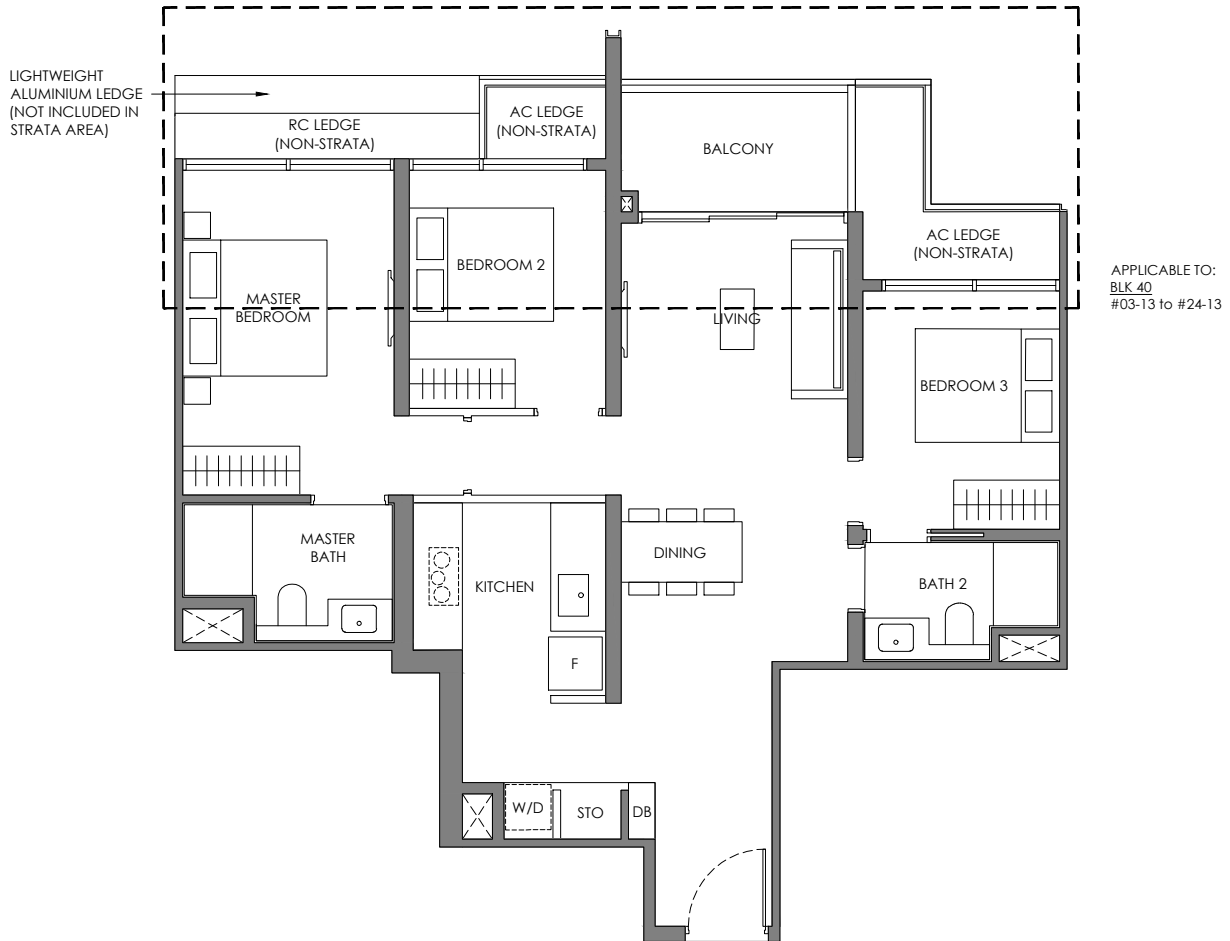
88 sqm / 947 sqft

BLK 40

#02-13 to #24-13

BLK 42

#02-20 to #24-20*



APPLICABLE TO:
BLK 40 #02-13 to #24-13
BLK 42 #02-20 to #24-20*

SCAN FOR FACADE CATALOGUE

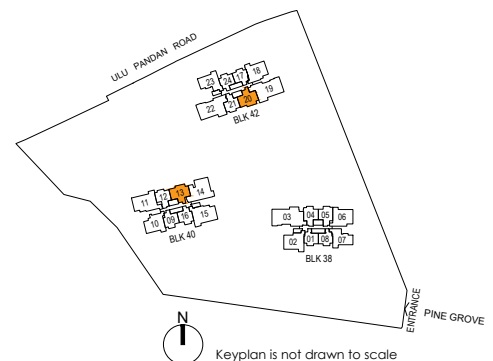


Legend (Where Applicable) :

F - Fridge
W/D - Washer cum Dryer
DB - Distribution Board
* Mirror Image
WC - Water Closet
HS - Household Shelter
PR - Powder Room
WI - Wine Chiller
STO - Store
DM - Display Module
WPD - Water Purifier & Dispenser
DW - Dish Washer

Wall not allowed to be hacked or altered (including by way of drilling)
Services void space (excluded from strata area)
Rainwater downpipe shaft space (excluded from strata area)

DISCLAIMER: Area includes balcony where applicable, and excludes among others, the air-conditioner (AC) ledge and RC - Reinforced Concrete Ledge. Please refer to the key plan for orientation. All floor plans are approximate measurements only and are subject to government re-survey. The Balcony shall not be enclosed unless with the approved balcony screen. The cost of screen and installation shall be borne by the Purchaser.



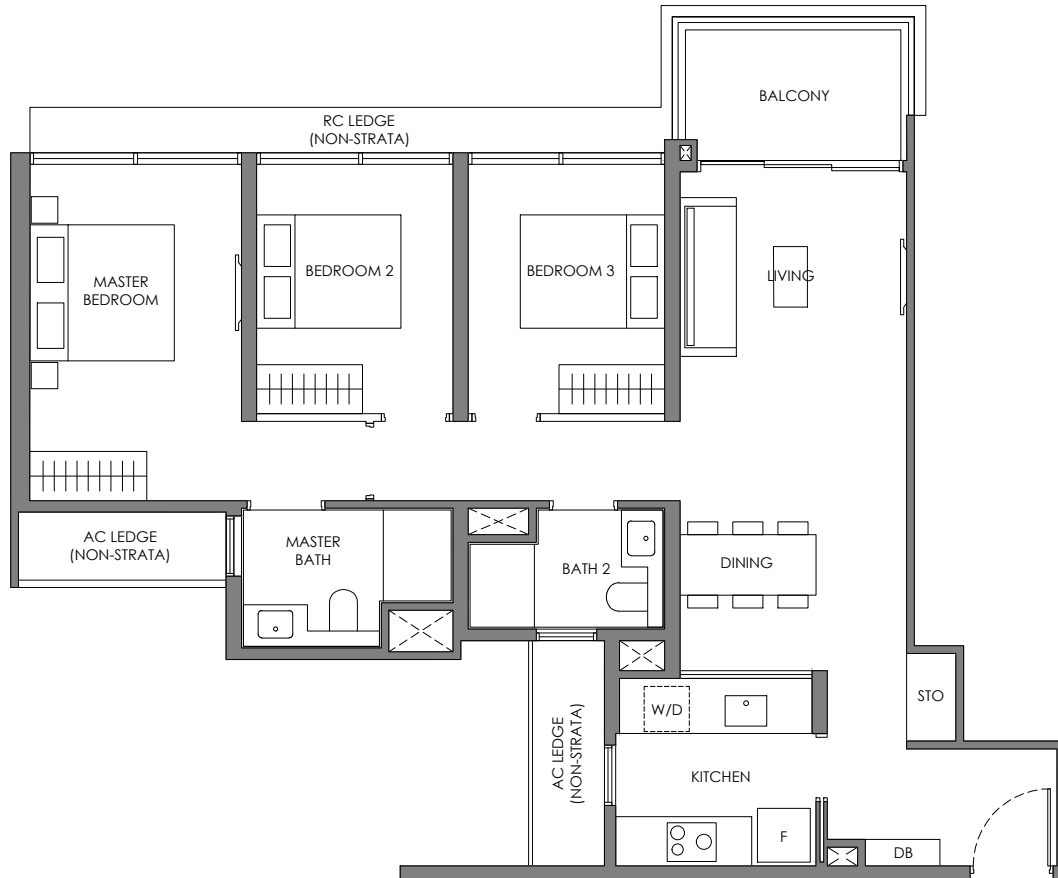
3 BEDROOM

Type C-2

92 sqm / 990 sqft

BLK 38

#02-07 to #24-07



Legend (Where Applicable) :

F - Fridge
W/D - Washer cum Dryer
DB - Distribution Board
* Mirror Image

WC - Water Closet
HS - Household Shelter
PR - Powder Room
WI - Wine Chiller

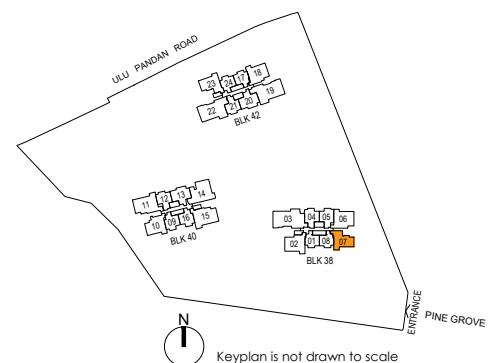
STO - Store
DM - Display Module
WPD - Water Purifier & Dispenser
DW - Dish Washer

Wall not allowed to be hacked or altered (including by way of drilling)

Services void space (excluded from strata area)

Rainwater downpipe shaft space (excluded from strata area)

DISCLAIMER: Area includes balcony where applicable, and excludes among others, the air-conditioner (AC) ledge and RC - Reinforced Concrete Ledge. Please refer to the key plan for orientation. All floor plans are approximate measurements only and are subject to government re-survey. The Balcony shall not be enclosed unless with the approved balcony screen. The cost of screen and installation shall be borne by the Purchaser.



Keyplan is not drawn to scale

3 BEDROOM

Type C-3

92 sqm / 990 sqft

BLK 42

#02-23 to #24-23



Legend (Where Applicable) :

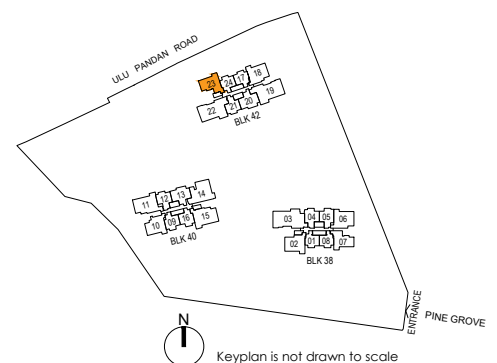
F - Fridge
W/D - Washer cum Dryer
DB - Distribution Board
* Mirror Image
WC - Water Closet
HS - Household Shelter
PR - Powder Room
WI - Wine Chiller
STO - Store
DM - Display Module
WPD - Water Purifier & Dispenser
DW - Dish Washer

Wall not allowed to be hacked or altered (including by way of drilling)

Services void space (excluded from strata area)

Rainwater downpipe shaft space (excluded from strata area)

DISCLAIMER: Area includes balcony where applicable, and excludes among others, the air-conditioner (AC) ledge and RC - Reinforced Concrete Ledge. Please refer to the key plan for orientation. All floor plans are approximate measurements only and are subject to government re-survey. The Balcony shall not be enclosed unless with the approved balcony screen. The cost of screen and installation shall be borne by the Purchaser.



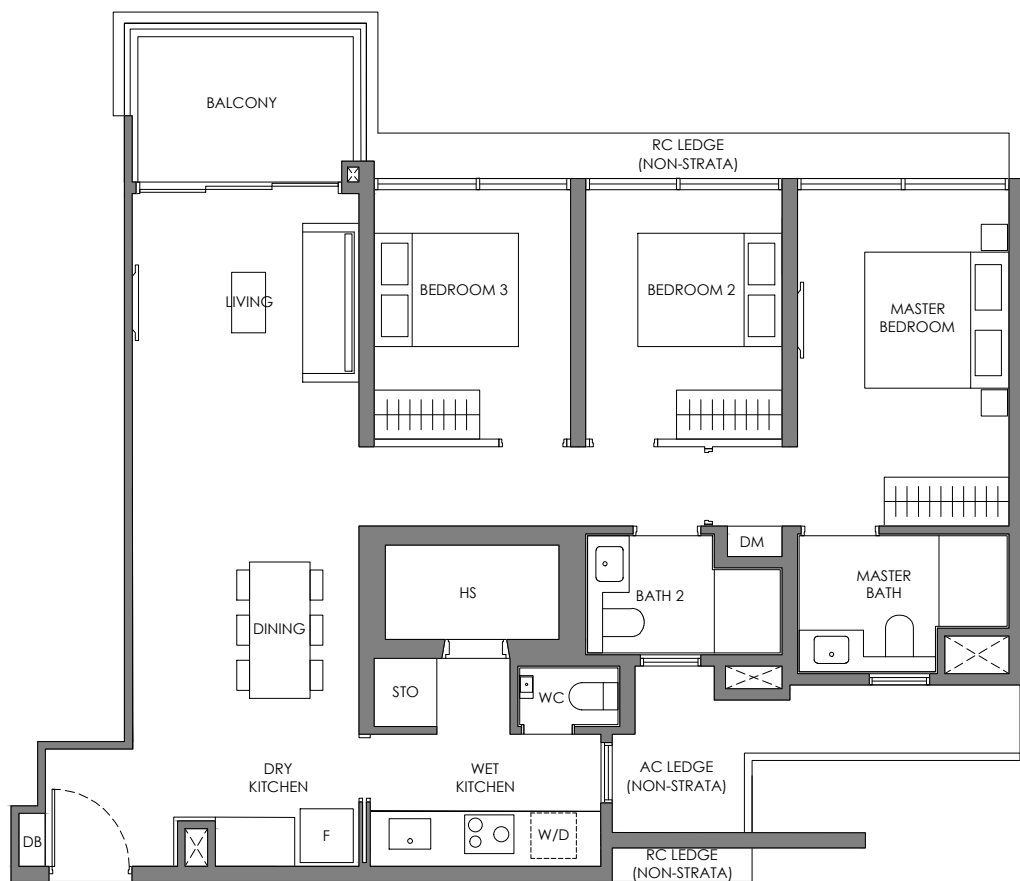
3 BEDROOM PREMIUM

Type CP-1

102 sqm / 1098 sqft

BLK 42

#02-18 to #24-18



Legend (Where Applicable) :

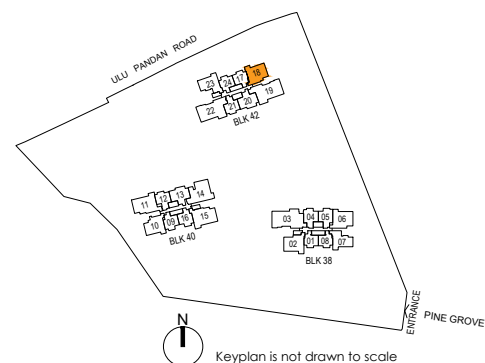
F - Fridge
W/D - Washer cum Dryer
DB - Distribution Board
* Mirror Image
WC - Water Closet
HS - Household Shelter
PR - Powder Room
WI - Wine Chiller
STO - Store
DM - Display Module
WPD - Water Purifier & Dispenser
DW - Dish Washer

Wall not allowed to be hacked or altered (including by way of drilling)

Services void space (excluded from strata area)

Rainwater downpipe shaft space (excluded from strata area)

DISCLAIMER: Area includes balcony where applicable, and excludes among others, the air-conditioner (AC) ledge and RC - Reinforced Concrete Ledge. Please refer to the key plan for orientation. All floor plans are approximate measurements only and are subject to government re-survey. The Balcony shall not be enclosed unless with the approved balcony screen. The cost of screen and installation shall be borne by the Purchaser.



3 BEDROOM PREMIUM

Type CP-2

103 sqm / 1109 sqft

BLK 38

#02-02 to #24-02

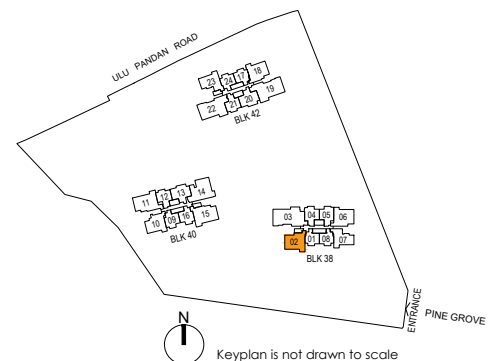


Legend (Where Applicable) :

F - Fridge
W/D - Washer cum Dryer
DB - Distribution Board
* Mirror Image
WC - Water Closet
HS - Household Shelter
PR - Powder Room
WI - Wine Chiller
STO - Store
DM - Display Module
WPD - Water Purifier & Dispenser
DW - Dish Washer

- Wall not allowed to be hacked or altered (including by way of drilling)
- Services void space (excluded from strata area)
- Rainwater downpipe shaft space (excluded from strata area)

DISCLAIMER: Area includes balcony where applicable, and excludes among others, the air-conditioner (AC) ledge and RC - Reinforced Concrete Ledge. Please refer to the key plan for orientation. All floor plans are approximate measurements only and are subject to government re-survey. The Balcony shall not be enclosed unless with the approved balcony screen. The cost of screen and installation shall be borne by the Purchaser.



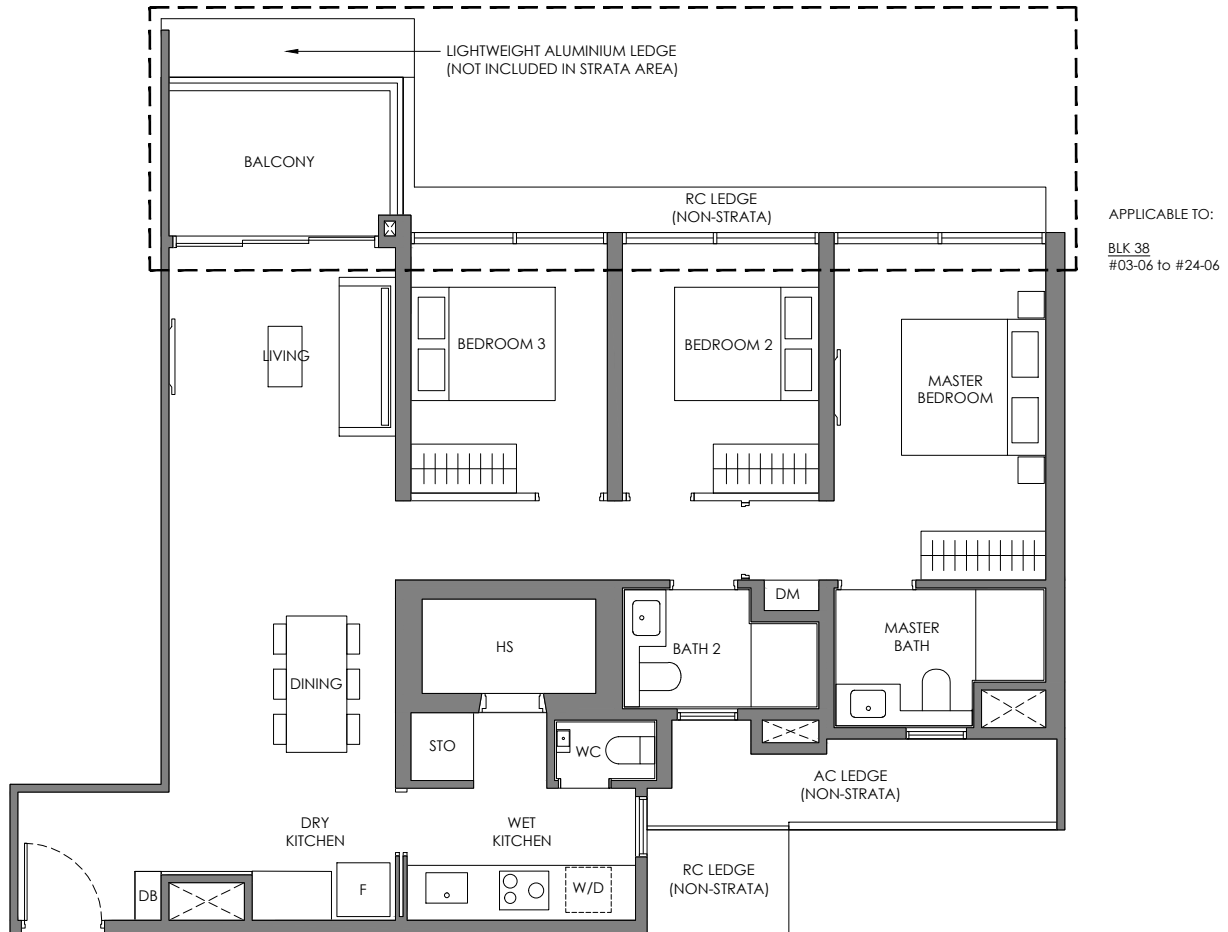
3 BEDROOM PREMIUM

Type CP-3

103 sqm / 1109 sqft

BLK 38

#02-06 to #24-06



APPLICABLE TO:
BLK 38
#02-06

SCAN FOR FACADE CATALOGUE

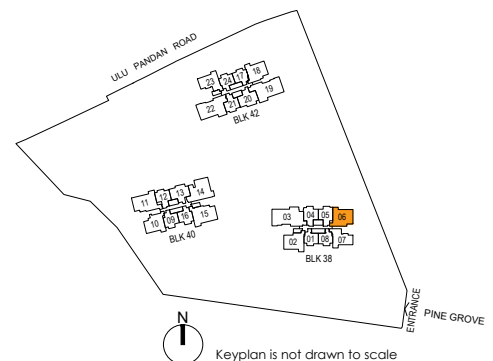


Legend (Where Applicable) :

F - Fridge
W/D - Washer cum Dryer
DB - Distribution Board
* Mirror Image
WC - Water Closet
HS - Household Shelter
PR - Powder Room
WI - Wine Chiller
STO - Store
DM - Display Module
WPD - Water Purifier & Dispenser
DW - Dish Washer

Wall not allowed to be hacked or altered (including by way of drilling)
Services void space (excluded from strata area)
Rainwater downpipe shaft space (excluded from strata area)

DISCLAIMER: Area includes balcony where applicable, and excludes among others, the air-conditioner (AC) ledge and RC - Reinforced Concrete Ledge. Please refer to the key plan for orientation. All floor plans are approximate measurements only and are subject to government re-survey. The Balcony shall not be enclosed unless with the approved balcony screen. The cost of screen and installation shall be borne by the Purchaser.



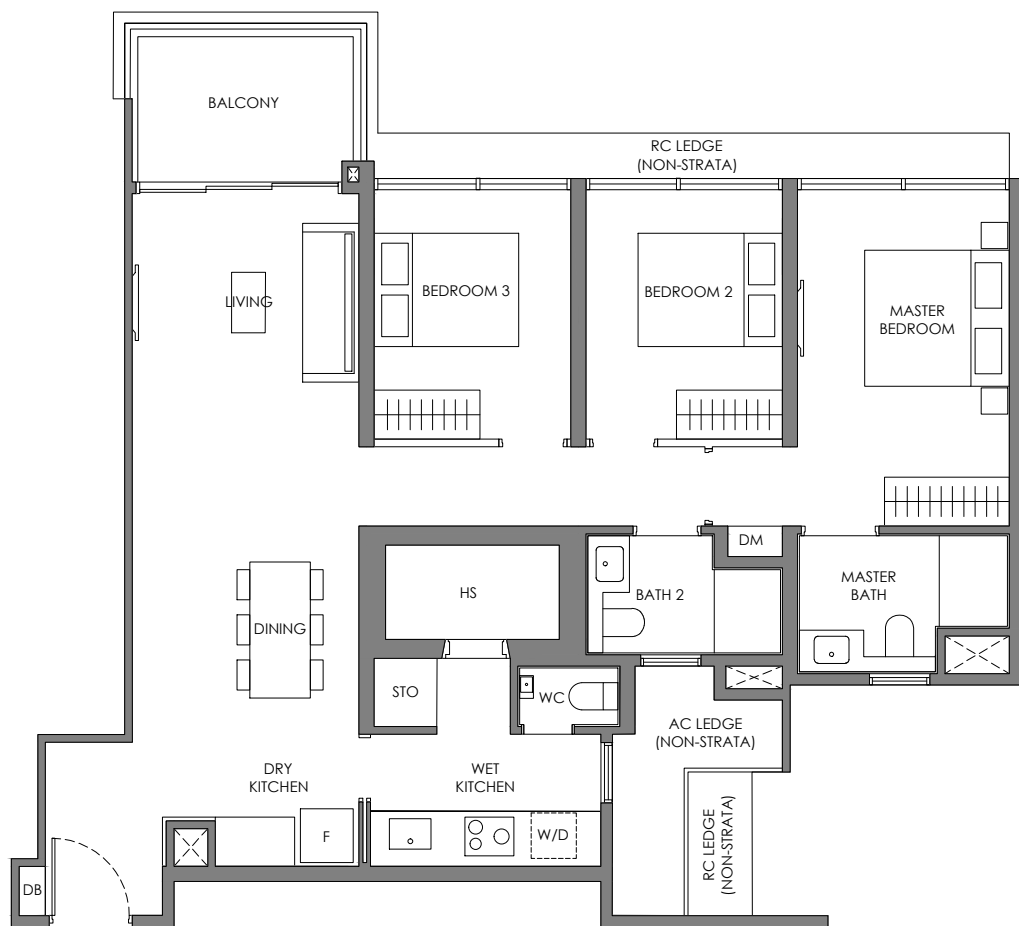
3 BEDROOM PREMIUM

Type CP-4

103 sqm / 1109 sqft

BLK 40

#02-10 to #24-10



Legend (Where Applicable) :

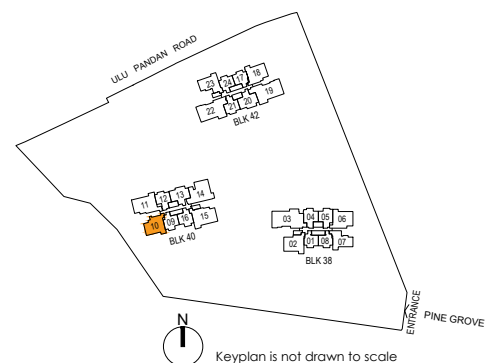
F - Fridge
W/D - Washer cum Dryer
DB - Distribution Board
* Mirror Image
WC - Water Closet
HS - Household Shelter
PR - Powder Room
WI - Wine Chiller
STO - Store
DM - Display Module
WPD - Water Purifier & Dispenser
DW - Dish Washer

Wall not allowed to be hacked or altered (including by way of drilling)

Services void space (excluded from strata area)

Rainwater downpipe shaft space (excluded from strata area)

DISCLAIMER: Area includes balcony where applicable, and excludes among others, the air-conditioner (AC) ledge and RC - Reinforced Concrete Ledge. Please refer to the key plan for orientation. All floor plans are approximate measurements only and are subject to government re-survey. The Balcony shall not be enclosed unless with the approved balcony screen. The cost of screen and installation shall be borne by the Purchaser.

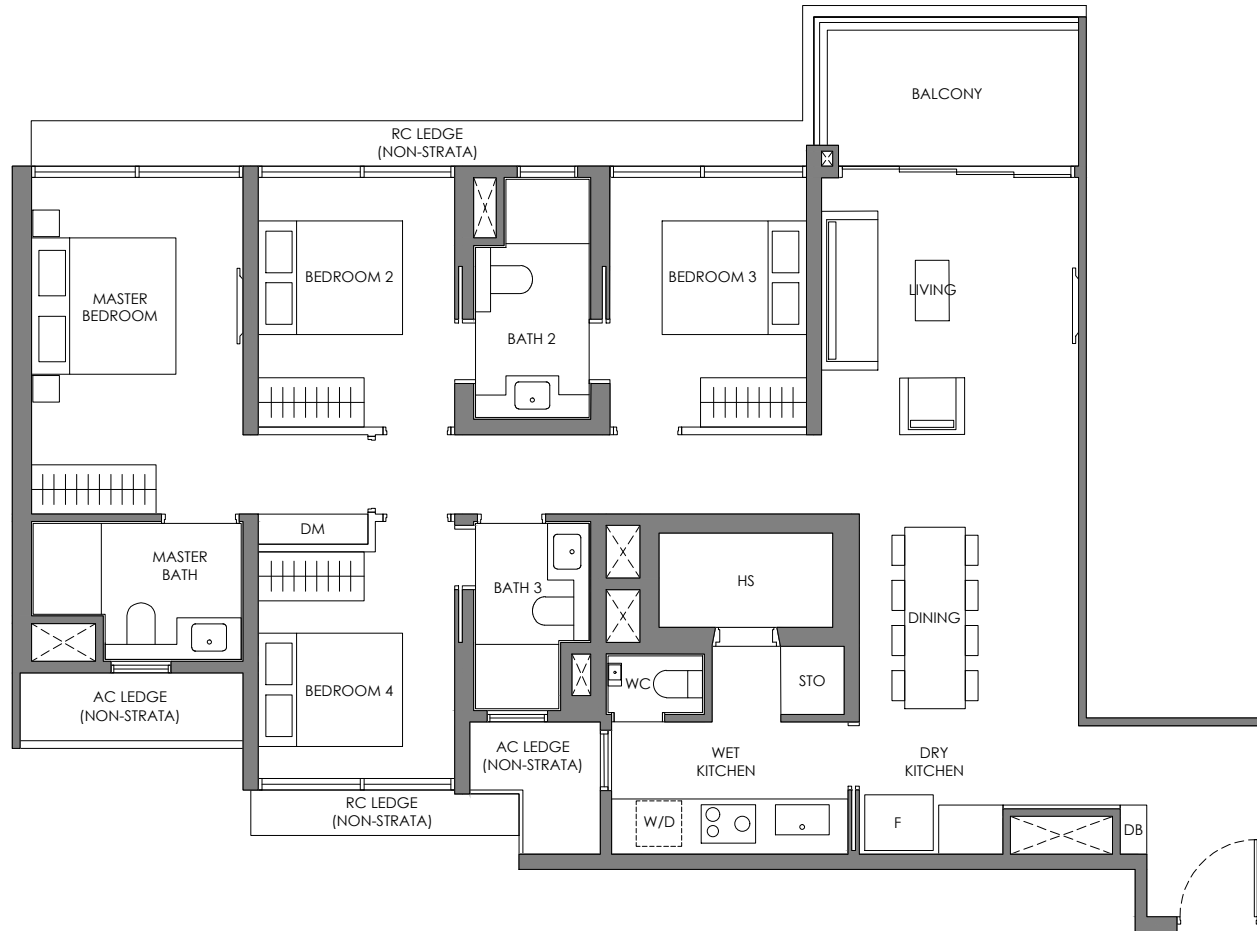


4 BEDROOM

Type D-1

124 sqm / 1335 sqft

BLK 40
#02-11 to #24-11

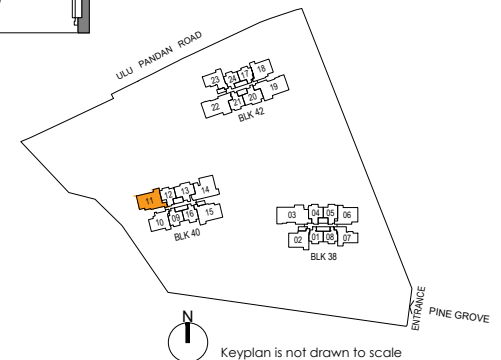


Legend (Where Applicable) :

F - Fridge
W/D - Washer cum Dryer
DB - Distribution Board
* Mirror Image
WC - Water Closet
HS - Household Shelter
PR - Powder Room
WI - Wine Chiller
STO - Store
DM - Display Module
WPD - Water Purifier & Dispenser
DW - Dish Washer

- Wall not allowed to be hacked or altered (including by way of drilling)
- Services void space (excluded from strata area)
- Rainwater downpipe shaft space (excluded from strata area)

DISCLAIMER: Area includes balcony where applicable, and excludes among others, the air-conditioner (AC) ledge and RC - Reinforced Concrete Ledge. Please refer to the key plan for orientation. All floor plans are approximate measurements only and are subject to government re-survey. The Balcony shall not be enclosed unless with the approved balcony screen. The cost of screen and installation shall be borne by the Purchaser.



4 BEDROOM

Type D-2

124 sqm / 1335 sqft

BLK 40
#02-15 to #24-15

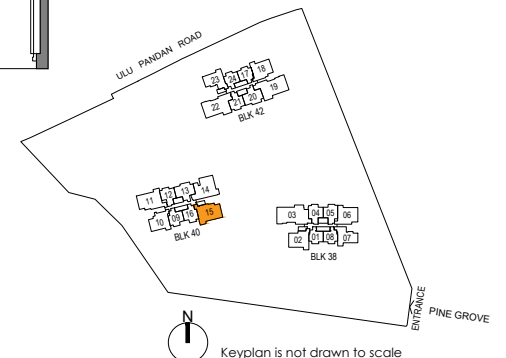


Legend (Where Applicable) :

F - Fridge
W/D - Washer cum Dryer
DB - Distribution Board
* Mirror Image
WC - Water Closet
HS - Household Shelter
PR - Powder Room
WI - Wine Chiller
STO - Store
DM - Display Module
WPD - Water Purifier & Dispenser
DW - Dish Washer

- Wall not allowed to be hacked or altered (including by way of drilling)
- Services void space (excluded from strata area)
- Rainwater downpipe shaft space (excluded from strata area)

DISCLAIMER: Area includes balcony where applicable, and excludes among others, the air-conditioner (AC) ledge and RC - Reinforced Concrete Ledge. Please refer to the key plan for orientation. All floor plans are approximate measurements only and are subject to government re-survey. The Balcony shall not be enclosed unless with the approved balcony screen. The cost of screen and installation shall be borne by the Purchaser.



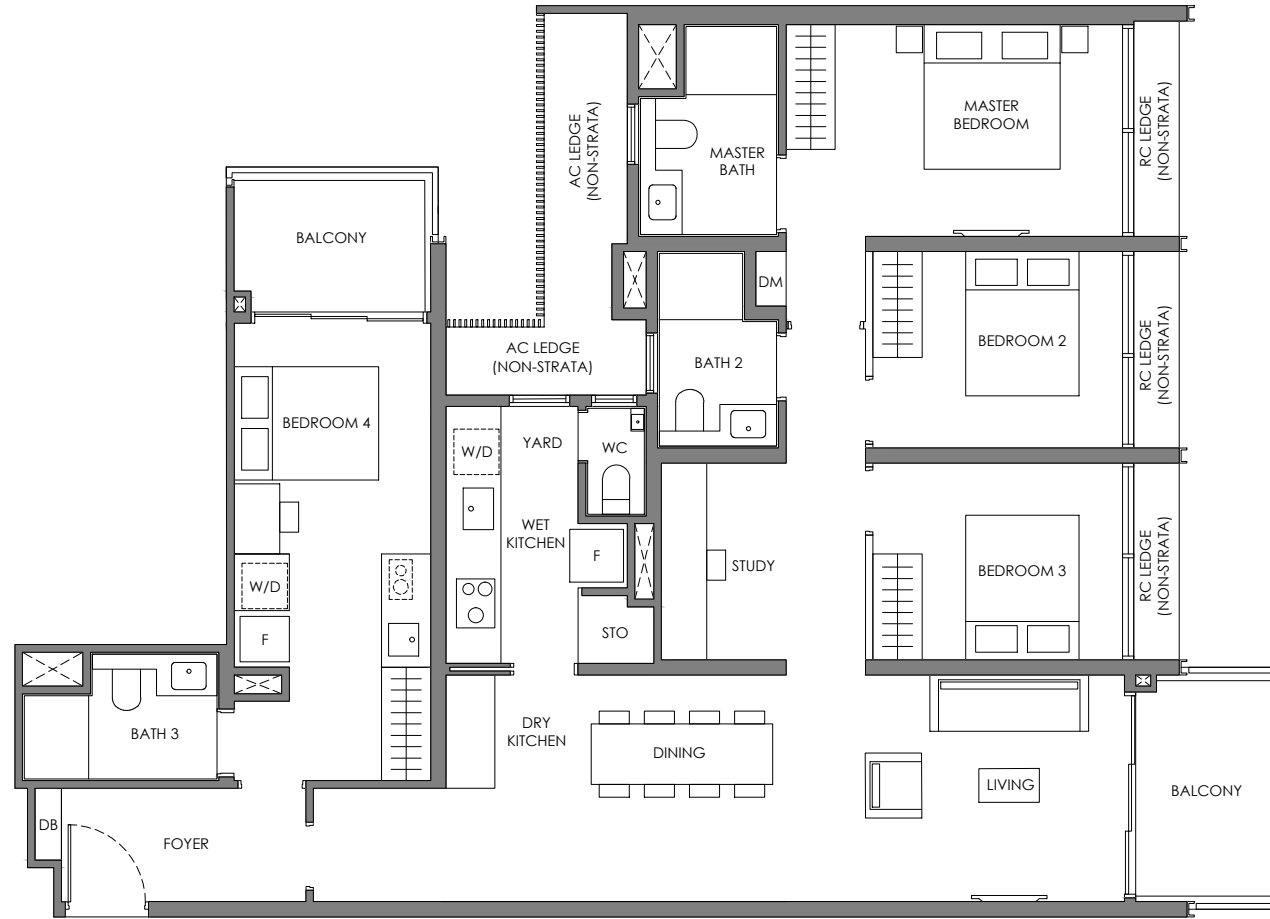
4 BEDROOM DUAL-KEY

Type DK

136 sqm / 1464 sqft

BLK 40

#02-14 to #24-14



Legend (Where Applicable) :

F - Fridge
W/D - Washer cum Dryer
DB - Distribution Board
* Mirror Image
WC - Water Closet
HS - Household Shelter
PR - Powder Room
WI - Wine Chiller
STO - Store
DM - Display Module
WPD - Water Purifier & Dispenser
DW - Dish Washer

- Wall not allowed to be hacked or altered (including by way of drilling)
- Services void space (excluded from strata area)
- Rainwater downpipe shaft space (excluded from strata area)

DISCLAIMER: Area includes balcony where applicable, and excludes among others, the air-conditioner (AC) ledge and RC - Reinforced Concrete Ledge. Please refer to the key plan for orientation. All floor plans are approximate measurements only and are subject to government re-survey. The Balcony shall not be enclosed unless with the approved balcony screen. The cost of screen and installation shall be borne by the Purchaser.



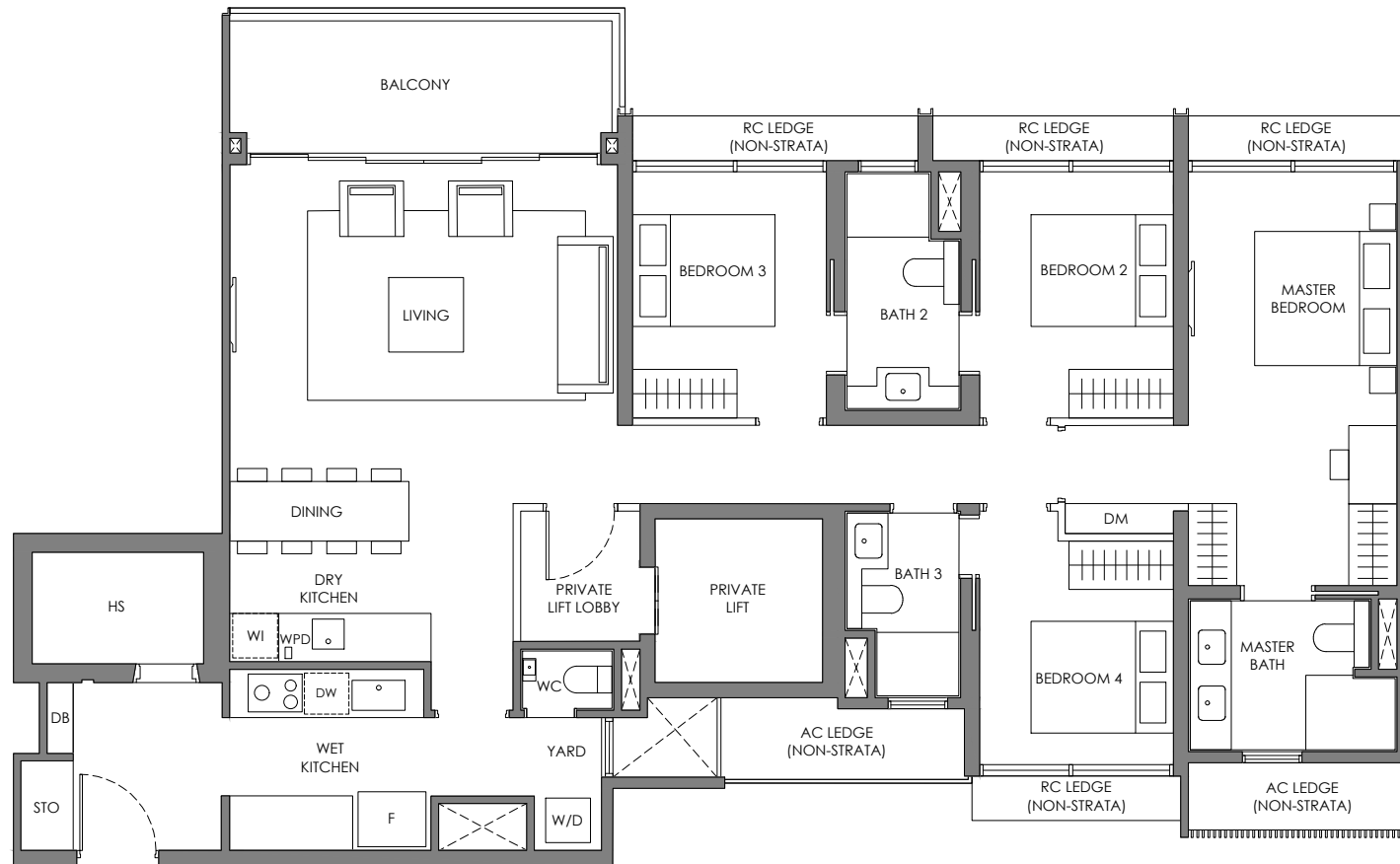
4 BEDROOM PREMIUM + PRIVATE LIFT

Type DP-1

144 sqm / 1550 sqft

BLK 42

#02-22 to #24-22

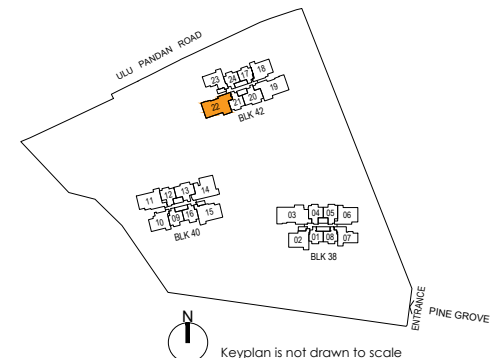


Legend (Where Applicable) :

F - Fridge
W/D - Washer cum Dryer
DB - Distribution Board
* Mirror Image
WC - Water Closet
HS - Household Shelter
PR - Powder Room
WI - Wine Chiller
STO - Store
DM - Display Module
WPD - Water Purifier & Dispenser
DW - Dish Washer

- Wall not allowed to be hacked or altered (including by way of drilling)
- Services void space (excluded from strata area)
- Rainwater downpipe shaft space (excluded from strata area)

DISCLAIMER: Area includes balcony where applicable, and excludes among others, the air-conditioner (AC) ledge and RC - Reinforced Concrete Ledge. Please refer to the key plan for orientation. All floor plans are approximate measurements only and are subject to government re-survey. The Balcony shall not be enclosed unless with the approved balcony screen. The cost of screen and installation shall be borne by the Purchaser.

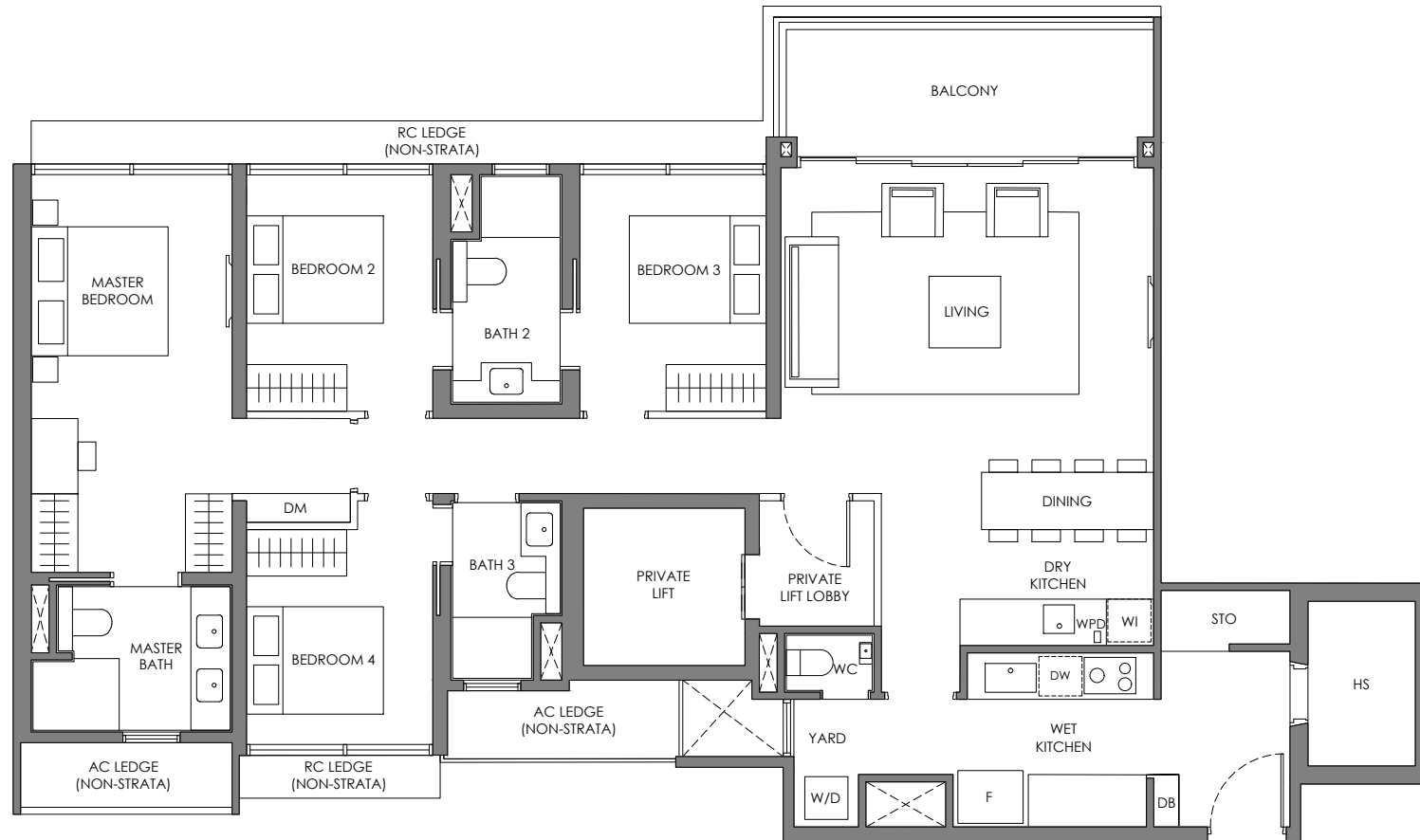


4 BEDROOM PREMIUM + PRIVATE LIFT

Type DP-2

144 sqm / 1550 sqft

BLK 42
#02-19 to #24-19

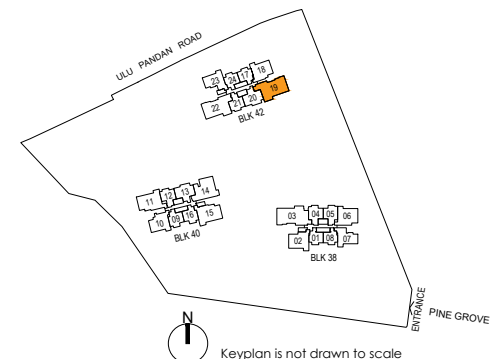


Legend (Where Applicable) :

F - Fridge
W/D - Washer cum Dryer
DB - Distribution Board
* Mirror Image
WC - Water Closet
HS - Household Shelter
PR - Powder Room
WI - Wine Chiller
STO - Store
DM - Display Module
WPD - Water Purifier & Dispenser
DW - Dish Washer

- Wall not allowed to be hacked or altered (including by way of drilling)
- Services void space (excluded from strata area)
- Rainwater downpipe shaft space (excluded from strata area)

DISCLAIMER: Area includes balcony where applicable, and excludes among others, the air-conditioner (AC) ledge and RC - Reinforced Concrete Ledge. Please refer to the key plan for orientation. All floor plans are approximate measurements only and are subject to government re-survey. The Balcony shall not be enclosed unless with the approved balcony screen. The cost of screen and installation shall be borne by the Purchaser.

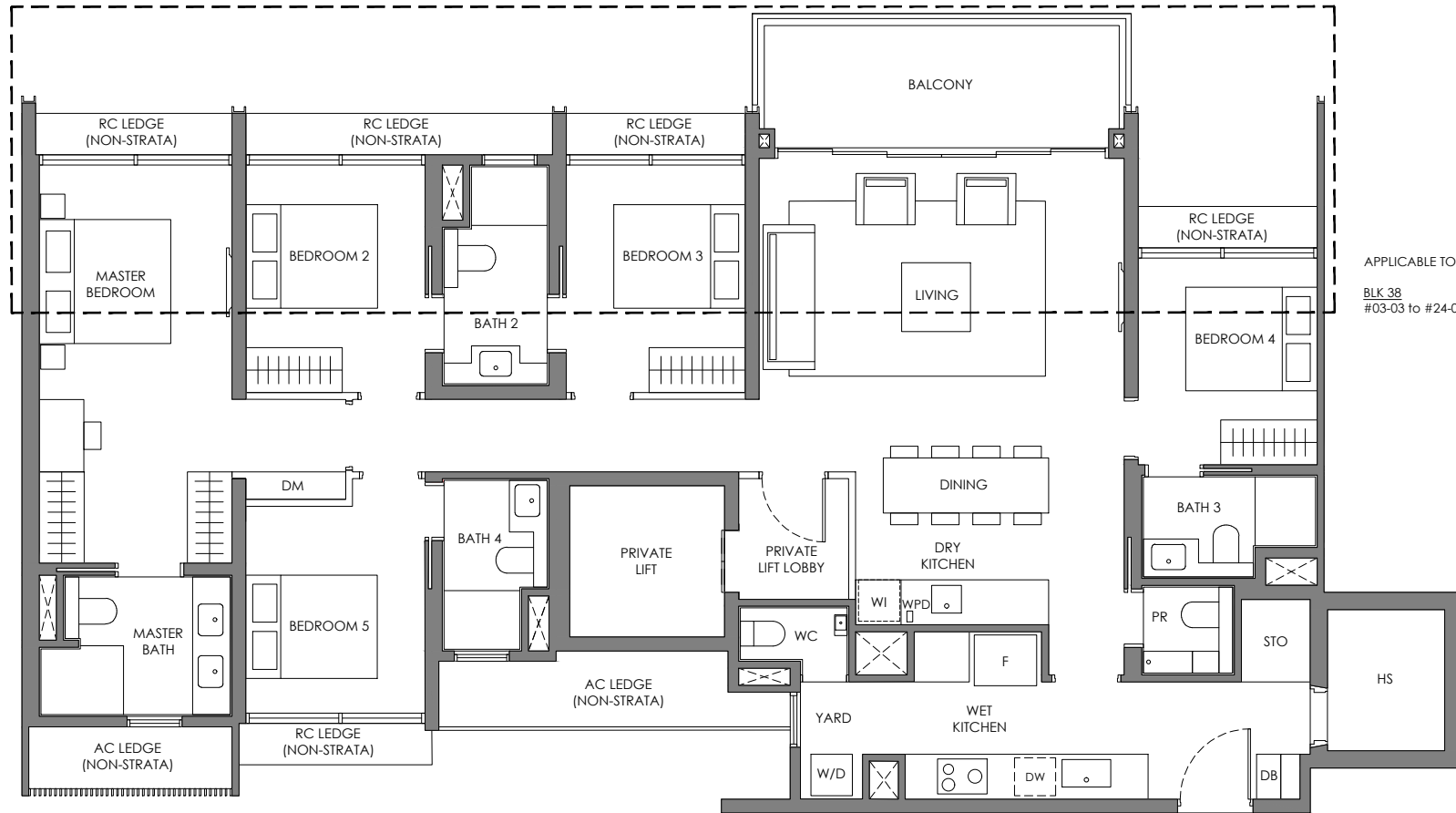


5 BEDROOM PREMIUM + PRIVATE LIFT

Type E

160 sqm / 1722 sqft

BLK 38
#02-03 to #24-03



APPLICABLE TO:
BLK 38
#03-03 to #24-03



Legend (Where Applicable) :

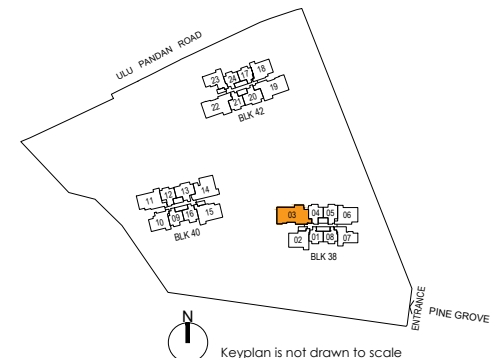
F - Fridge
W/D - Washer cum Dryer
DB - Distribution Board
* Mirror Image
WC - Water Closet
HS - Household Shelter
PR - Powder Room
WI - Wine Chiller
STO - Store
DM - Display Module
WPD - Water Purifier & Dispenser
DW - Dish Washer

- Wall not allowed to be hacked or altered (including by way of drilling)
- Services void space (excluded from strata area)
- Rainwater downpipe shaft space (excluded from strata area)

DISCLAIMER: Area includes balcony where applicable, and excludes among others, the air-conditioner (AC) ledge and RC - Reinforced Concrete Ledge. Please refer to the key plan for orientation. All floor plans are approximate measurements only and are subject to government re-survey. The Balcony shall not be enclosed unless with the approved balcony screen. The cost of screen and installation shall be borne by the Purchaser.

APPLICABLE TO:
BLK 38
#02-03

SCAN FOR FACADE CATALOGUE



Keyplan is not drawn to scale